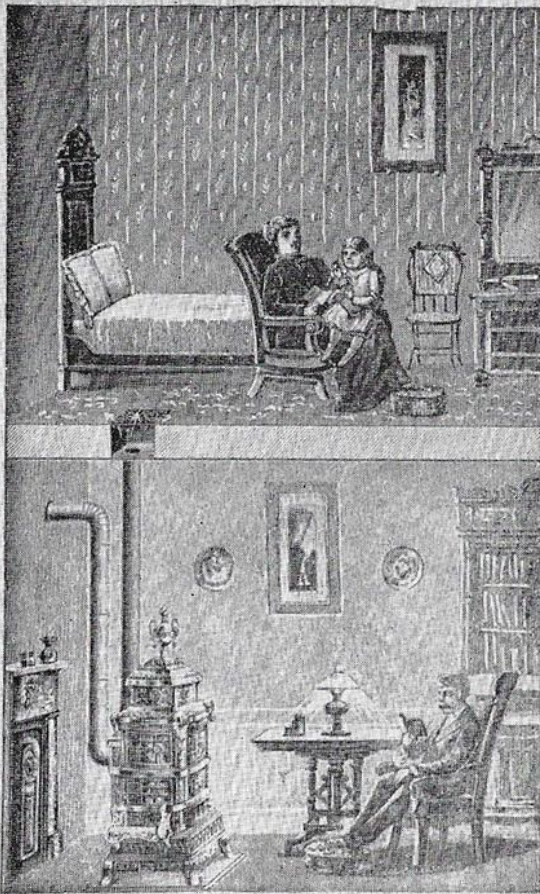


Heating Stoves 1730-1930

19th Century American Stoves



WHAT YOU WANT!

Do	Want rooms evenly warmed?
You	Want to avoid cold drafts?
	Want to breathe pure air?

IF SO

You Want the Improved Howe Ventilator,
WITH NEW SPHERICAL CENTER GRATE
Mounted on BALL BEARINGS, the most eco-
nomical and perfect-working grate on the
market.

Patent Ventilating Gas-Tight Magazine.

LOOK WITHIN

And see how it works as compared with other stoves.
If you want also to heat rooms on second floor
see cut on last page showing

THE IMPROVED HOWE
AS A DOUBLE HEATER.

ENTIRELY NEW DESIGNS.

The Handsomest as well as the Best.

PLATE 129. From the Howe Ventilating Stove Catalogue, Cortland,
New York, 1889. (Courtesy C. W. Drepperd collection.)

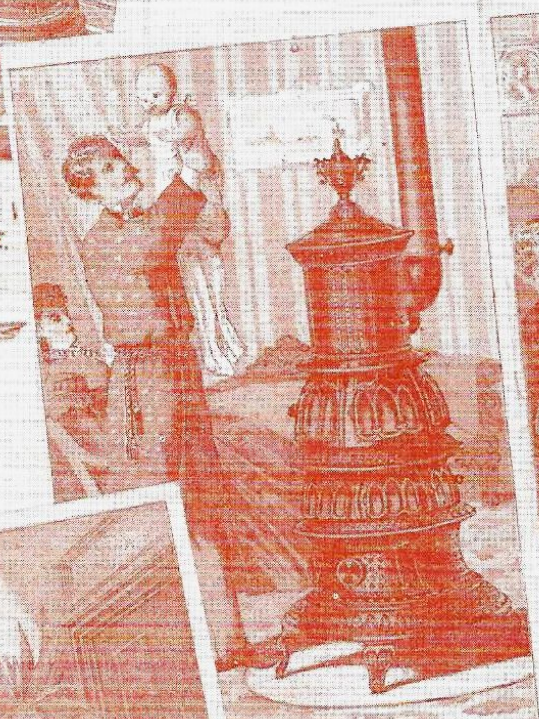




PLATE 58. A Vose stove of the 1840's still used in the Sunday School of the Greenville, Mass. Baptist Church. Both sets of doors may be left open to give out more heat, and top compartment could be used for baking or popping corn. Cable edge and diamond pattern of castings matches patterns found in much of the three-mold glass.



PLATE 64. Sharp, fine castings distinguish this stove, No. 2 size, 44 inches high, made by J. H. Shear, Albany, N. Y. in the 1840's. Center ornament may be removed and placed on top, when boiling hole is needed for tea kettle. The stove is in the house at "Rock Hill" just outside Albany, built by Benjamin Nott, son of Dr. Eliphalet Nott. (Now owned by Gilbert M. Tucker.)



PLATE 79. A parlor cook stove in the Victorian manner. Height of stove 26 inches; urn 9½ inches. (*Owned by the author.*)

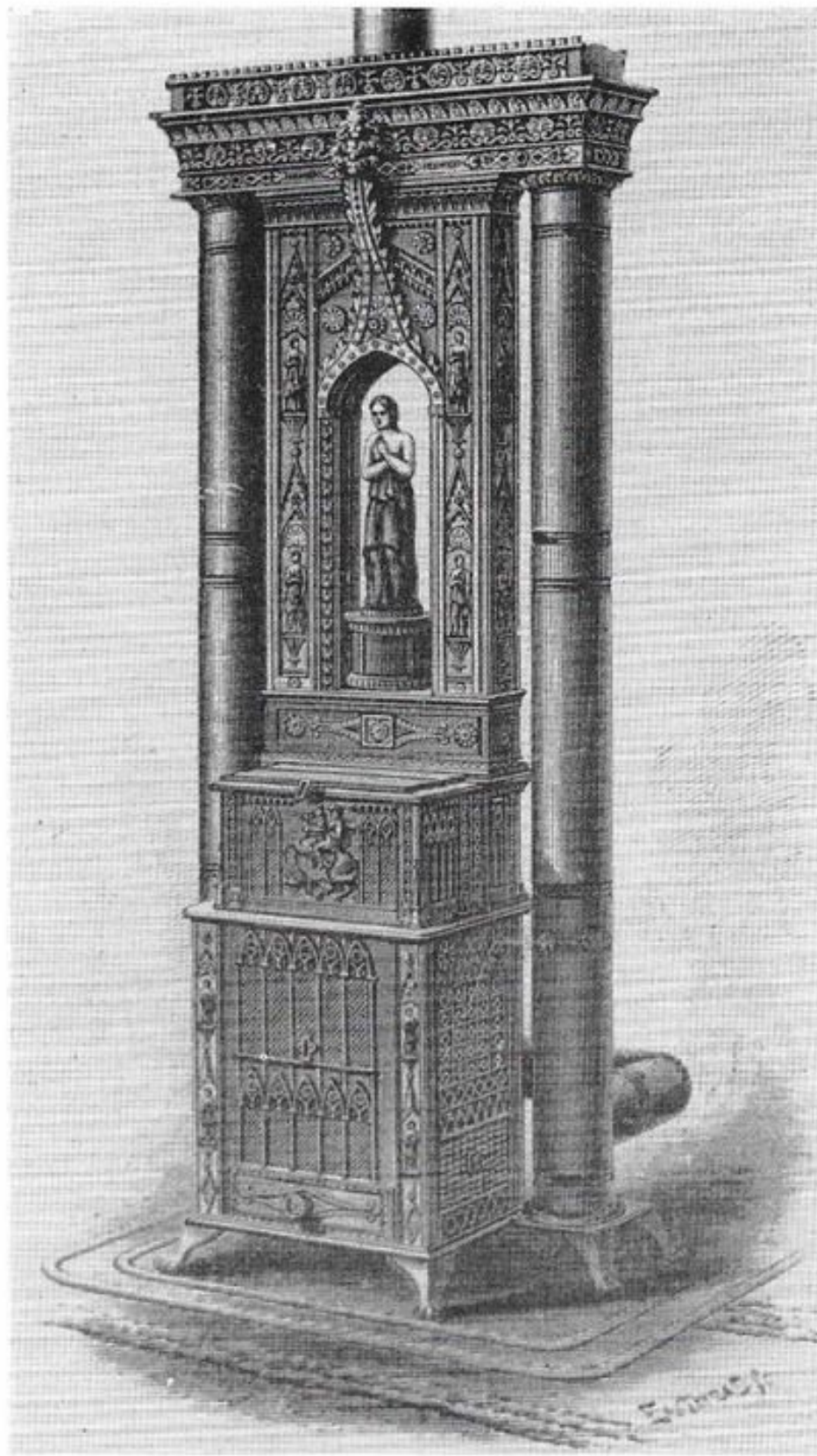


PLATE 81. First of Dr. Nott's anthracite burning stoves with flues outside stove. From an old wood cut. (Photo by Edwin G. Conde, Schenectady. Courtesy Union College.)



PLATE 86. Plenty of heating surface is provided in a patent cone stove, which would economize 50% of the fuel. From an advertisement in *The Lady's Almanac* for 1856, published in Boston. (Author's collection.)

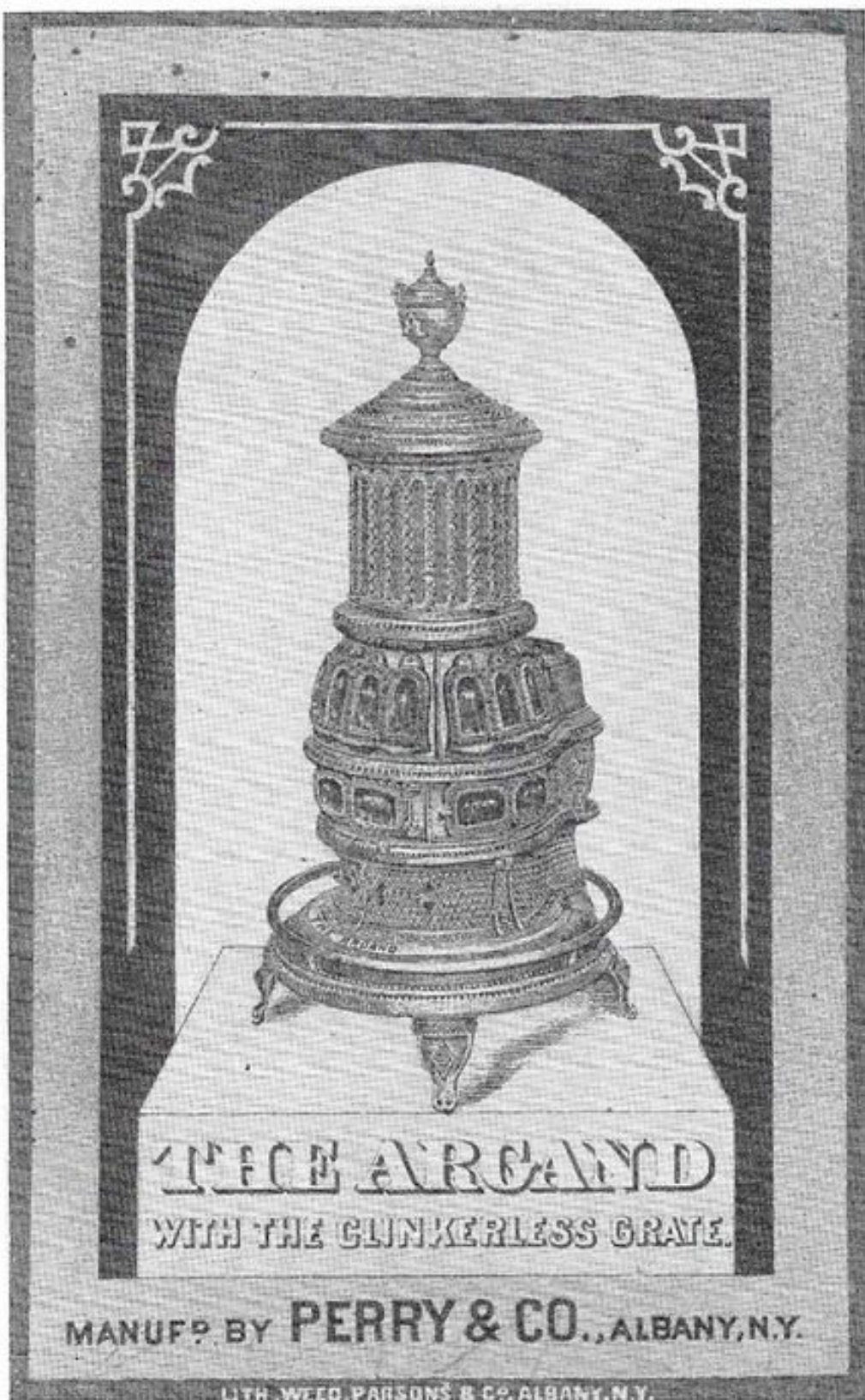


PLATE 87. Trade card showing *The Argand*, a base burner with a clinkerless grate. If set up and used according to directions it was unnecessary to shake grate, for grate could be cleared with a poker. Only needed fueling twice a day, and ashes removed once a day.

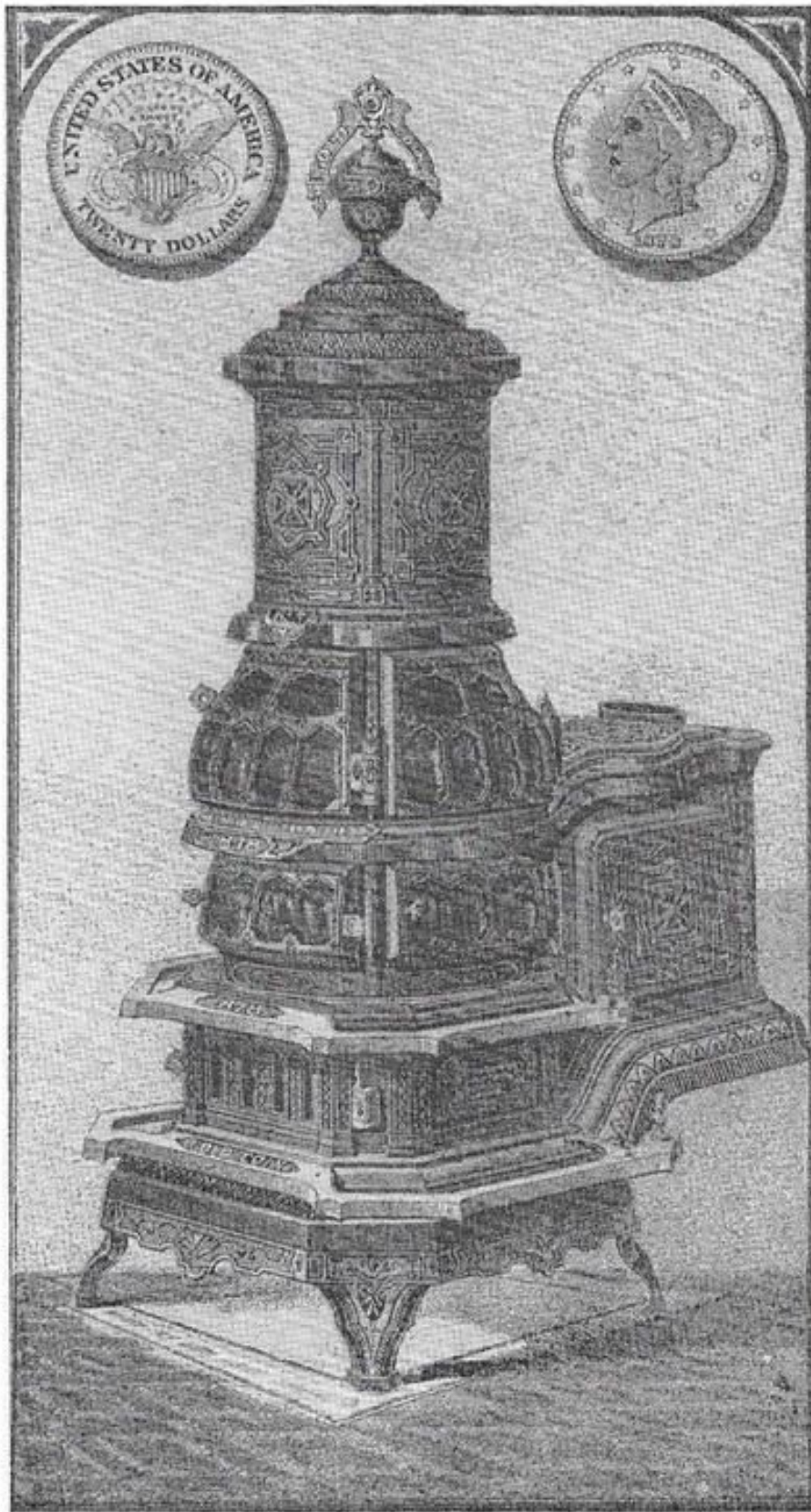


PLATE 88. A Gold Coin Base Burner with double firepot. Manufactured by Bussey, McLeod & Co., Troy, New York. Patent date, 1878.



SMITH & ANTHONY STOVE COMPANY.

The Boston & Maine Air Tight.



MADE IN FOUR SIZES—Nos. 00, 0, 1 and 2. Tea Kettle Backs if Desired.

Top Ovens, Front Ovens, and Covers and Centres for making one or two holes on top, can be furnished when desired.

These Air-Tights are known wherever wood is burned. They are universal favorites, and are considered to be the most desirable Wood Heaters made. The design on these stoves is secured to us by Letters Patent, and no imitations will be allowed.

PLATE 94. From the catalogue of Smith & Anthony Stove Company, Boston, 1885-6. (Courtesy Carl W. Drepperd.)

then are passed between rolls, the upper one of which is unconnected with the lower, rolling only by friction.

By the time the sheet is cooled, it is about 15 inches wide. Packages of three sheets are now laid in the furnace, and then rolled again, after the upper sheet has been brushed and charcoal-powder thrown between them to prevent adhesion. If thin iron is desired, the sheets are subjected to a third heating, in packages of four to six, and re-rolled, after which they are trimmed to the proper dimensions. They are now sent

SMITH & ANTHONY STOVE COMPANY.



The Hub Collage.



This is more substantial than the Plain Air Tight, half of the body being of cast iron.

MADE IN THREE SIZES—Nos. 0, 1 and 2.

Covers and Centres for making one or two holes on top can be furnished when desired, also Top and Front Ovens.

PLATE 95. From the catalogue of Smith & Anthony Stove Company, Boston, 1885-6. (Courtesy Carl W. Drepperd.)

to the forge, where they are heated and hammered three times, in packages of from sixty to eighty. After the first hammering, each sheet is swabbed with a wet mop to harden the surface (it is said that tar is sometimes used for this purpose.)

Two packages, one hot and one cold are now mixed in alternate sheets, to produce the greenish color in cooling, and the mixed package is then passed backward and forward under a hammer, and after this is again mixed and rehammered.



PLATE 97. *Stove Annual*, 1859-60. Almy & Swain, New Bedford, Mass. Seavey's Ventilating Parlor Stove in 23 sizes. (*Author's collection.*)

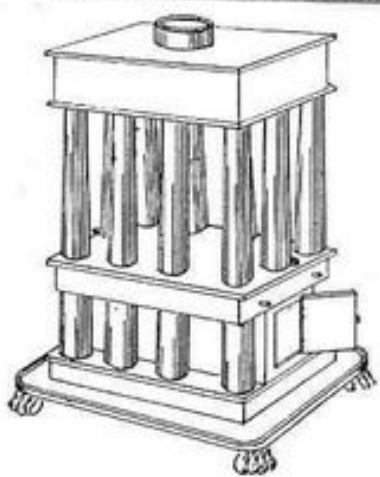
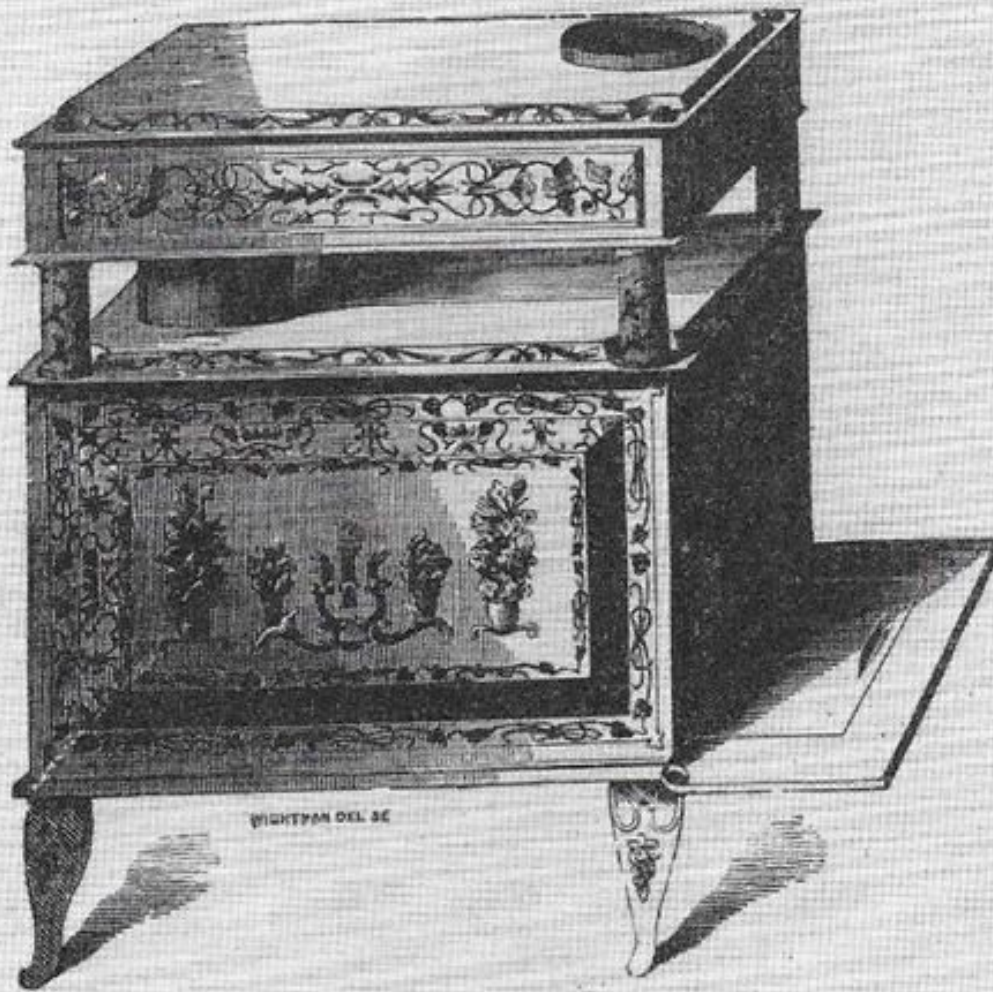


PLATE 117. Dumb Stove or Heating Drum. Patented by J. C. Treadwell June 30, 1838. (Courtesy Edwin Johnson, Inc., New York.)

JEWETT & ROOT'S



HALL STOVE AND DRUM.

Burns 30 inch wood.

PLATE 118. From Jewett and Root's Catalogue of Stoves, Buffalo, N. Y., 1860. (Courtesy Carl W. Drepperd.)

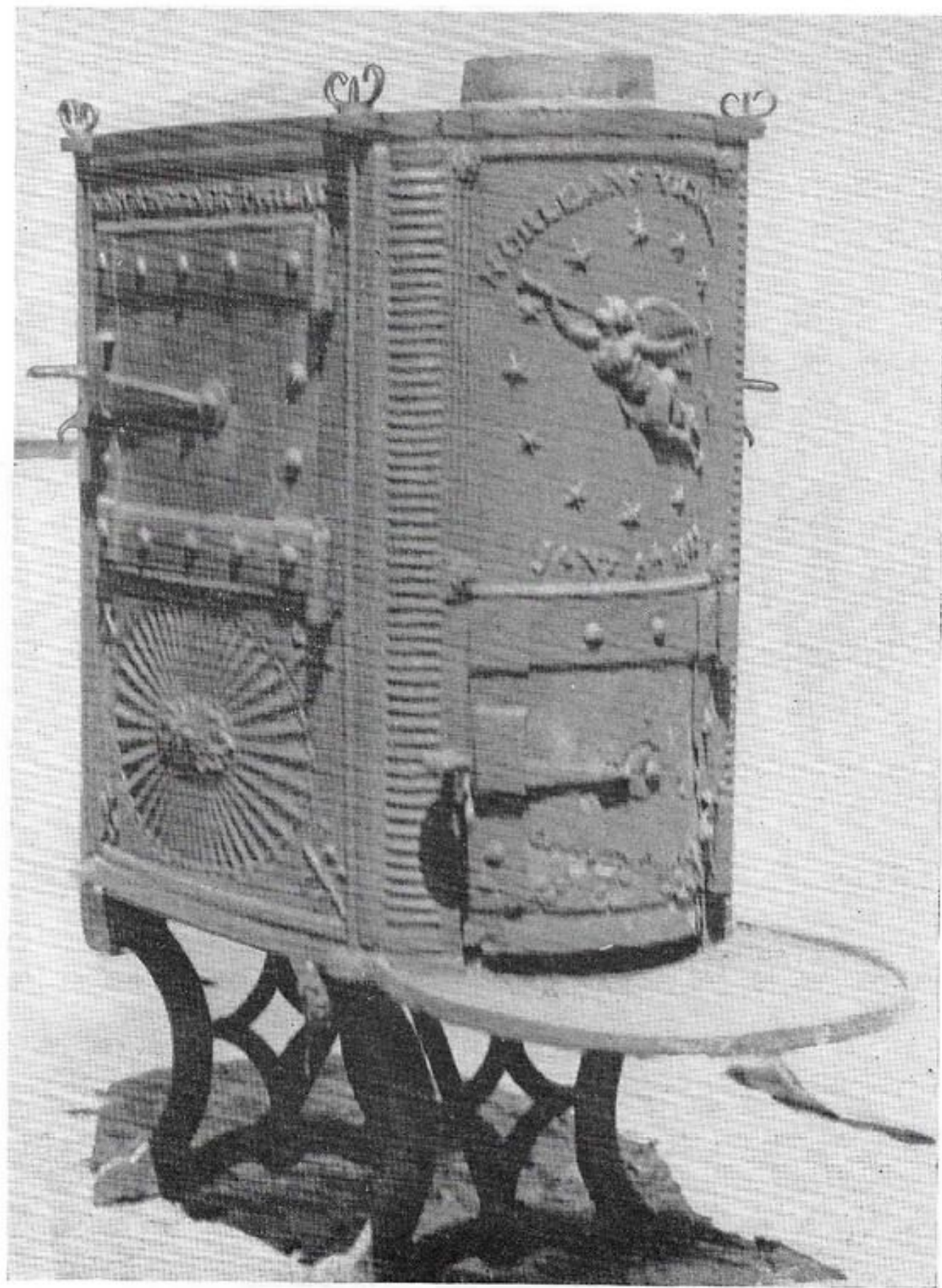
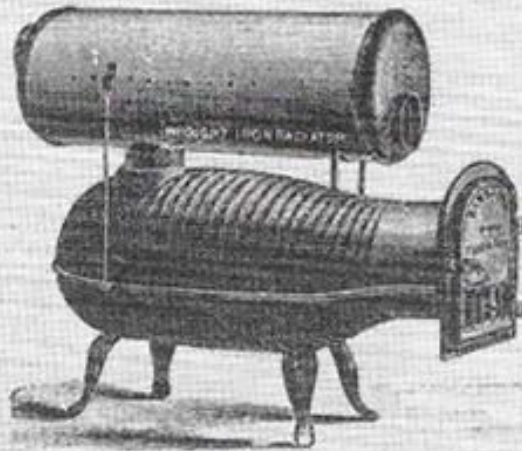


PLATE 121. (Courtesy Edwin Jackson, Inc., New York.)



PLATE 122. General Zachary Taylor wood stove made by John Morrison & Son of Troy, N. Y. in 1848. The General was then a popular hero running for president, and the Mexican battles he fought and won — Palo Alto, Monterey, and Buena Vista — are listed in the banner encircling his head.

BARSTOW'S Wrought Iron Wood Furnace.



For Brick Setting or in Portable Form.

ONE SIZE.

Height.	Width.	Fire Box.	Size of Door.
5 feet 4 inches.	2 feet 1 inch	5 feet 2 inches	

Number of brick required for setting, 1,000.

The height may be reduced 10 inches by removing the legs and standing it on one course of brick.

In this Furnace we have produced a good serviceable article, that for simplicity, durability and economy cannot be equalled.

The Fire Box is made of very heavy cast iron, corrugated, thus insuring against any danger of warping or cracking.

The Radiator is made of heavy iron, firmly put together, thus obtaining great durability and perfect freedom from gas and smoke.

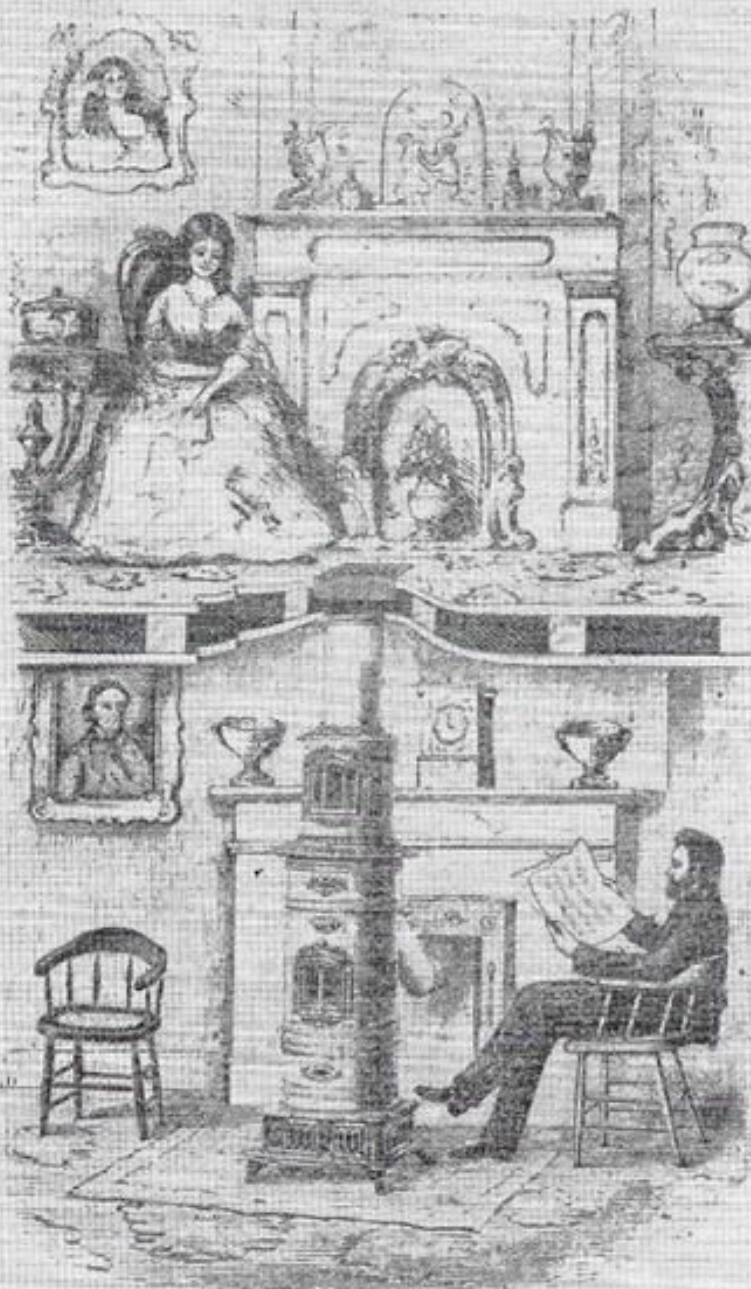
The Flues are so arranged that the products of combustion are carried twice the length of the radiator before reaching the smoke pipe, thereby utilizing all the heat, and securing a large and powerful heating surface. These flues can be readily cleaned through the openings at the ends of the radiator.

An experience of many years in Wood Burning Furnaces and Stoves has long since convinced us that far better results are obtained by giving the bottom a rounded form, so shaped that the live coals from the burning wood remain for a long time, thus securing the advantage of keeping up a continuous fire with great economy and the least possible attention.

Special Prices and Estimates furnished on application at our office, in person or by letter.

SAVE YOUR FUEL AND ROOM.

SANFORD'S PATENT



Portable and for Brick, for warming several Rooms, or a whole house with one fire.

CHALLENGE HEATERS.

Entered according to Act of Congress, in the year 1859, by Sanford, Truslow & Co., in the
Clerk's Office of the District Court of the U. S., for the Southern District of New York.

READ THE WITHIN LETTERS.

PLEASE CIRCULATE.

PLATE 131. From a catalogue of Sanford, Truslow & Co., National Stove Works, 239 Water Street, New York. Sanford's Challenge Heater for warming with one fire a whole house, or a single room. 1859. (Author's collection.)

JEWETT & ROOT'S



GAS BURNER.

No. 2, Top A.

No. 2, Top B.

No. 2, Top C.

PLATE 132. Gas-burning stove in Jewett & Root's Catalogue, Buffalo, New York. 1860. (Courtesy Carl W. Drepperd collection.)



PLATE 135. "Sanford's Mammoth or Globe Heater adapted for use in Railroad Depots, Factories, Stores, Public Rooms, &c.," From a catalogue of Sanford, Truslow & Co., 239 Water Street, New York. Circa 1859. (Author's collection.)

PLATE 136. From the *Stove Annual*, 1859-60, of Almy & Swain, New Bedford, Mass. (Author's collection.)



W. PECKHAM, UTICA, N.Y.

CHERRY PARLOR STOVE IS IN USE AND BURNERS
NEAR ARRIVE AT OLD MAIDENPORT
PETROTHAL
PARLOR WOOD.



SUP
with Clinker
and
Manufactured by P.

No 2, 3, 4, 5.



NO CLINKERS! NO B...
with Ovens No



American Base Burner
PARLOR OVEN STOVE
WORMER & MCGARVEY
MANUFACTURERS ALBANY, N.Y.

Cheerful, Ornamental, Economical.
The "TRIUMPH" Self-Feeding Base Burner, with Clinkerless Grate and Illuminated
by BUSSEY, MELBOD & CO., Troy, N. Y.